



MONTHLY MEMBERSHIP PROGRESS REPORT

District 105SW

Results as of: 01/31/2018

GMT: JOOST PAIJMANS

LOCATION ENGLAND

GMT CA

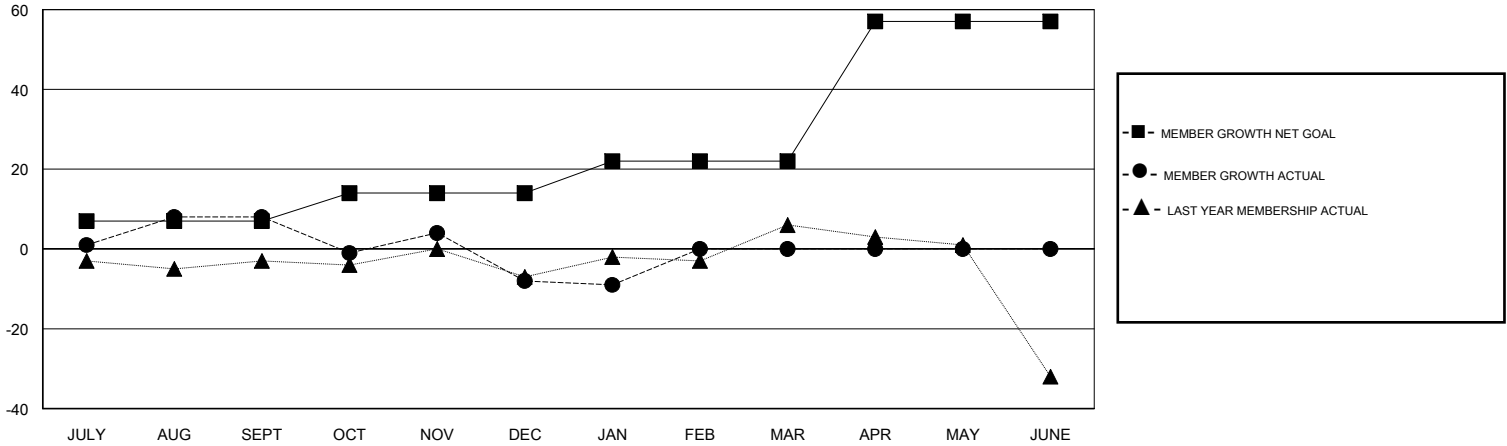
| Clubs | | | |
|-----------------------|---------------|-----------|---------------|
| RESULTS FOR 2017-2018 | | | |
| QUARTER | NEW CLUB GOAL | NEW CLUBS | DROPPED CLUBS |
| JULY/AUG/SEPT | 0 | 0 | 0 |
| OCT/NOV/DEC | 0 | 0 | 0 |
| JAN/FEB/MAR | 0 | 0 | 0 |
| APR/MAY/JUNE | 1 | 0 | 0 |

| Members | | | |
|-----------------------|------------------------|----------------------|--|
| RESULTS FOR 2017-2018 | | | |
| QUARTER | MEMBER GROWTH NET GOAL | MEMBER GROWTH ACTUAL | DROPPED MEMBERS ACTUAL (including transfers) |
| JULY/AUG/SEPT | 7 | 42 | 22 |
| OCT/NOV/DEC | 7 | 25 | 38 |
| JAN/FEB/MAR | 8 | 14 | 14 |
| APR/MAY/JUNE | 35 | 0 | 0 |

GOALS AND ACTUAL NEW CLUBS CUMULATIVE



GOALS AND ACTUAL MEMBERS CUMULATIVE



| | | | |
|------------------|--|--|--------------|
| DROPPED CLUBS: 0 | 36 CLUBS OF 57 ADDED 1 OR MORE NEW MEMBERS | <u>GENDER DISTRIBUTION</u> | |
| DROPPED MEMBERS | | MALE | 869 (74.46%) |
| DECEASED | 9 | FEMALE | 298 (25.54%) |
| CLUB CANCELLED | 0 | Women Percentage Fiscal Year Goal: 25% | |
| OTHER | 65 | TOTAL FAMILY UNIT MEMBERS | 155 |
| TOTAL | 74 | FAMILY MEMBERS PAYING HALF DUES | 79 |

[CLICK HERE FOR CUMULATIVE MEMBERSHIP DATA](#)